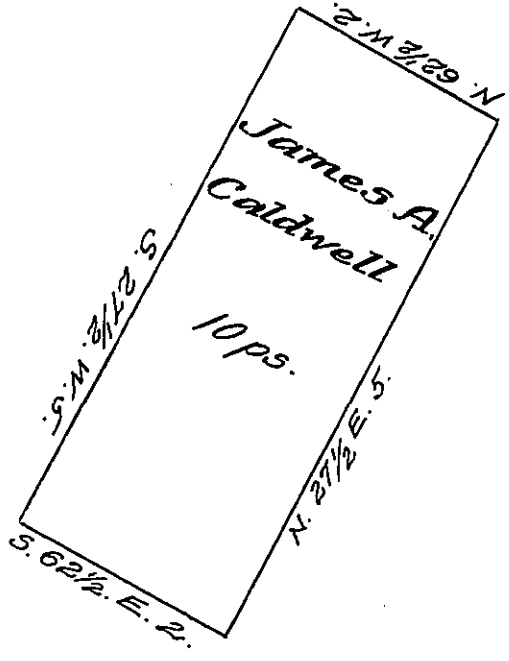


York County Shore



Lancaster County Shore

A Draught of an Island situate in Little Britain town-
 ship Lancaster County Opposite land of Jeremiah Brown on the
 East John Kirks on the West about twenty five perches South
 West of the lower Extremity of Caldwell's Island Containing
 ten perches Strict measure Surveyed in pursuance of a Warrant
 dated the 2nd day of December A.D. 1818 granted to James A.
 Caldwell

p^c Jacob Hibshman D.S.

To Jacob Spangler Esq^r }
 Surveyor General. }

IN TESTIMONY that the above is a copy of the original remaining on file in
 the Department of Internal Affairs of Pennsylvania, made
 conformably to an Act of Assembly approved the 16th day of
 February, 1833, I have hereunto set my Hand and caused
 the Seal of said Department to be affixed at Harrisburg,
 this ninth day of December 1907.

Henry Howell
 Secretary of Internal Affairs.